

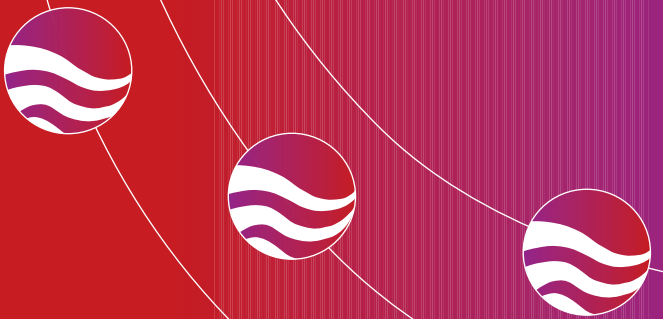


Irish National Organisation of the Unemployed

February 2011

# Know Your Welfare Rights

## What you need to know if you become unemployed



### Introduction to Social Welfare

If you lose your job you should immediately contact your local Social Welfare Office where you can apply for Jobseeker's Benefit (JB) or Jobseeker's Allowance (JA) which are the two unemployment payments. This is very important as any delay in making your claim could result in a loss of payment.

### 2011 Maximum Payment Rates

	Jobseeker's Benefit	Jobseeker's Allowance*
Personal Rate	€188.00	€188.00
Qualified Adult	€124.80	€124.80
Each Qualified Child	€ 29.80	€ 29.80
Each Qualified Child Half Rate	€ 14.90	€ 14.90

\* Note: The JA and Supplementary Welfare Allowance (SWA) rate is €100 per week for new applicants aged 18 to 21 and €144 per week for new applicants aged 22 to 24. SWA is available from the Community Welfare Officer. The qualified adult rate for 18 to 21 years olds is €100 and €124.80 for 22 to 24 year olds. However people under 25 will receive the full rate if they participate in an approved training or education course or have dependant children.

### Collecting Your Payment

JB and JA payments are made weekly, through the Post Office. The payment is made using your Social Services swipe card. It is advisable to bring a valid photo id (e.g. driving licence or passport) with you to collect your payment.

### Keeping Your Payment

In order to qualify for, and continue to receive, JB or JA, you must be genuinely seeking and available to take-up full-time work. Genuinely Seeking Work legislation means that you must be willing to accept any reasonable offer of employment, and any offer of education, training or development which is recommended by a Department of Social Protection (DSP) or FÁS official. You will be asked for proof of your job-seeking efforts. Keep a record of all letters sent to / received from employers, including emails, telephone calls, advertisements from newspapers and any other evidence of your job-seeking.

If you have any difficulty in receiving your payment please contact the INOU or your local Resource Centre.

### Jobseeker's Benefit (JB)

Jobseeker's Benefit is an unemployment payment based on social insurance (PRSI) contributions. These can be paid or credited. To qualify for a JB payment you must be:

- Resident in the Irish Republic
- Aged under 66
- Fully unemployed or unemployed for at least 3 days out of any consecutive 6 days
- Available for, Capable of and Genuinely Seeking Full-time work, training, education and/or development courses

And

- Have sufficient paid or credited PRSI contributions

### JB Entitlement and PRSI Contributions

To receive a JB payment you will need to satisfy the PRSI contributions criteria in either of the following ways:

1

- Have 104 weeks paid PRSI contributions since starting work
- Have 39 weeks paid or credited PRSI contributions in the Relevant Tax Year \* of which 13 must be paid contributions in the relevant tax year or certain other periods.

Or

2

- Have 104 weeks paid PRSI contributions since starting work
- Have 26 weeks paid PRSI contributions in the Relevant Tax Year
- Have 26 weeks paid PRSI contributions in the Tax Year prior to the Relevant Tax Year

\* The relevant tax year is the tax year two years prior to the year you are making your claim for an unemployment payment. For making a claim for JB in 2011 the relevant tax year is 2009.

### Duration of a JB Payment / Moving to JA

JB is paid for a maximum of 12 months if you have 260 or more PRSI contributions and a maximum of 9 months if you have less than 260 contributions. When JB finishes you may be able to claim a Jobseeker's Allowance payment, subject to a means test.

## Jobseeker's Allowance (JA)

Jobseeker's Allowance is the other main unemployment payment. If you do not have enough PRSI contributions to qualify for a JB payment, you may qualify for a JA payment, providing you are:

- Resident in the Irish Republic
- Aged 18 or over
- Aged under 66
- Fully unemployed or unemployed for at least 3 days out of any consecutive 6 days
- Available for, capable of and genuinely seeking full-time work, training, education and/or development courses

### And

- Satisfy a means test
- Satisfy the Habitual Residence Condition

## Means Test

A Means Test is a test carried out by the Department of Social Protection (DSP) to assess your means of income.

When assessing a claim, the following are taken into account in the means test:

- Cash Income – including spouse/partner's income
- Capital (savings, assets etc.) First €20,000 not assessed
- Property (other than your own home)
- Benefit and Privilege (the benefit received from living with your parents, if aged under 25)

The weekly rate of your JA payment will depend on your means.

- 👉 You should maintain a record of bank statements or accounts as these may be required.

## The Habitual Residence Condition (JA applicants only)

is an assessment carried out by the DSP when you are applying for a JA payment. You may satisfy the rule if you have been:

- Legally residing in Ireland for 2 years or more
- Have worked in Ireland and intend to remain in Ireland

## Supplementary Welfare Allowance (SWA) Payment

If you are refused or are awaiting payment of either JB or JA you may, in certain circumstances, qualify for a means tested Supplementary Welfare Allowance Payment from the Community Welfare Officer (CWO).

## Credits or Credited PRSI Contributions

Credits are social insurance (PRSI) contributions that will help protect your social insurance entitlements (e.g. pensions) during periods when you are not able to make paid contributions (i.e. when unemployed). If you have become unemployed you can sign-on for credits if you have paid PRSI contributions in the previous 2 years.

- 👉 If you sign on for credits, you will be required to meet the genuinely seeking work criteria.
- 👉 Credits can be very important in ensuring that you qualify for payments such as a state pension.

## Secondary Benefits

Secondary Benefits are benefits that you may be entitled to as a result of being in receipt of Jobseeker's Benefit or Jobseeker's Allowance. These include:

### 👉 From your local Health Service Executive (HSE)

- Rent or Mortgage Interest Supplement (for own home only)
- Medical Card / Doctor Only Visit Card
- Back to School Clothing & Footwear Allowance
- Diet Supplement

### 👉 From your local Social Welfare office

- Fuel Allowance (This is not payable if you are in receipt of JB or in receipt of JA for less than 15 months)
- Smokeless Fuel Allowance

### 👉 From your Local Authority

- Differential Rent
- Rental Accommodation Scheme (RAS)

## Interested in joining the INOU?



The INOU lobbies and campaigns on behalf of unemployed people. We welcome applications for membership. As a member you will receive INOU Welfare Rights publications and the INOU Newsletter. You can be involved in the organisation in a number of ways. The level of involvement is up to you but we need your support. **Membership is free of charge.** Membership forms are available online and directly from the organisation. Please contact John Farrell for further information.

📞 01 856 0088    ✉️ [membership@inou.ie](mailto:membership@inou.ie)

🌐 [www.inou.ie/membership](http://www.inou.ie/membership)

## Checklist ✓

### When you become unemployed

- ✓ You should register with FÁS.
- ✓ Apply for JB or JA at your local Social Welfare Office.
- ✓ If you do not qualify for JB you may be entitled to a means tested JA payment.
- ✓ If you are not entitled to either JB/JA or are awaiting payment of JB/JA, you may be entitled to a means tested Supplementary Welfare Allowance payment from the CWO.
- ✓ If you are not entitled to JB/JA you may be able to sign for PRSI credits.

### When making your claim

- ✓ When you are making your claim you will need to bring photographic proof of identity (passport or drivers licence) and proof of your address (a recent household bill such as ESB, a bank statement or tax document).
- ✓ You will need to bring your P45, if available or a letter from your employer saying when you finished work. A letter from your employer explaining the reasons why your job finished may speed up your claim.
- ✓ If you are applying for Jobseeker's Benefit you will also need to bring the most recent P60 form (2010).

### Keeping Your JB or JA payment

- ✓ You must be genuinely seeking and available to take-up full-time work; training, education and/or development courses.
- ✓ You must inform your local Social Welfare Office of any change in your circumstances. If your circumstances worsen you may be entitled to additional assistance.

### Appealing a payment refusal

- ✓ If you have been refused a JB or JA payment (DSP) or a SWA payment you should appeal that decision as soon as possible. Contact the INOU for more information or visit [www.socialwelfareappeals.ie](http://www.socialwelfareappeals.ie)



**Irish National Organisation  
of the Unemployed**

## Welfare Rights Information

📞 01 856 0088    ✉️ [welfareinfo@inou.ie](mailto:welfareinfo@inou.ie)

websites: [www.inou.ie](http://www.inou.ie)    [www.redundancy.ie](http://www.redundancy.ie)

**FREE ■ CONFIDENTIAL ■ IMPARTIAL**

*This publication is funded by The Department of Community, Equality and Gaeltacht Affairs.*